

Monte Carlo Sampling Methods

Sargur Srihari

srihari@cedar.buffalo.edu

Topics

1. Markov Chain Monte Carlo
2. Basic Metropolis Algorithm
3. Markov Chains
4. Metropolis-Hastings Algorithm
5. Gibbs Sampling
6. Slice Sampling

1. Markov Chain Monte Carlo (MCMC)

- Rejection sampling and importance sampling for evaluating expectations of functions
 - suffer from severe limitations, particularly with high dimensionality
- MCMC is a very general and powerful framework
 - Markov refers to sequence of samples rather than the model being Markovian
- Allows sampling from large class of distributions
- Scales well with dimensionality
- MCMC origin is in statistical physics (Metropolis 1949)

2. Basic Metropolis Algorithm

- As with rejection and importance sampling use a proposal distribution (simpler distribution)
- Maintain a record of current state $z^{(\tau)}$
- Proposal distribution $q(z|z^{(\tau)})$ depends on current state
- Thus sequence of samples $z^{(1)}, z^{(2)} \dots$ forms a Markov chain
- Write $p(z) = \tilde{p}(z)/Z_p$ where $\tilde{p}(z)$ is readily evaluated
- At each cycle generate candidate z^* and test for acceptance

Metropolis Algorithm

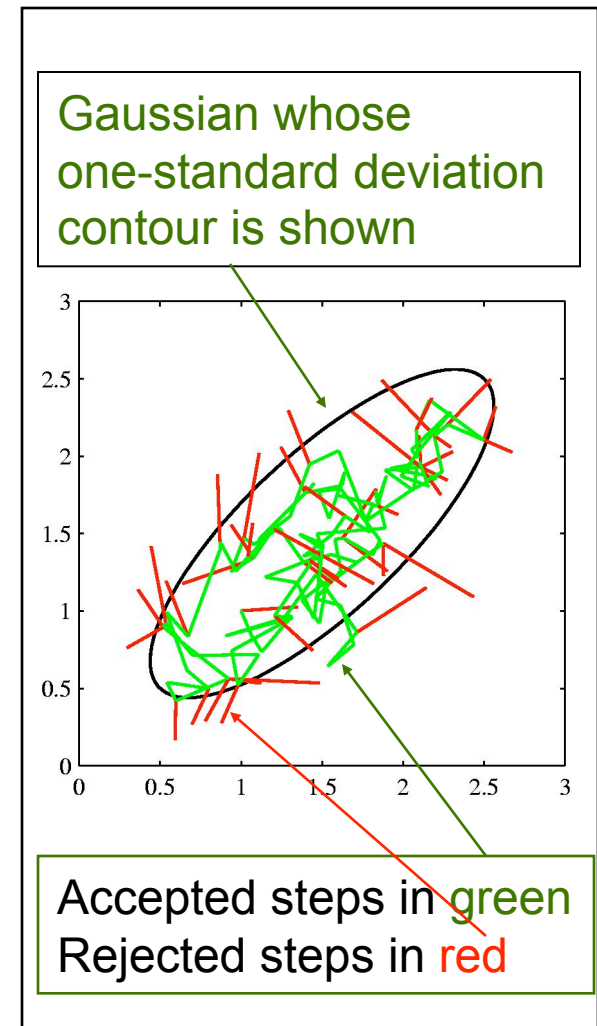
- Assumes simple proposal distribution that is symmetric

$$q(z_A|z_B) = q(z_B|z_A) \text{ for all } z_A, z_B$$

- Generated sample z^* is accepted with probability

$$A(z^*, z^{(\tau)}) = \min\left(1, \frac{\tilde{p}(z^*)}{\tilde{p}(z^{(\tau)})}\right)$$

- Done by choosing $u \sim U(0,1)$ and accepting if $A(z^*, z^{(\tau)}) > u$
- If accepted then $z^{(\tau+1)} = z^*$
- Otherwise:
 - z^* is discarded,
 - $z^{(\tau+1)}$ is set to $z^{(\tau)}$ and
 - another candidate drawn from $q(z|z^{(\tau+1)})$



Inefficiency of Random Walk

- Consider simple random walk
- State space z consisting of integers with probabilities

$$\begin{aligned}p(z^{(\tau+1)} = z^{(\tau)}) &= 0.5 \\p(z^{(\tau+1)} = z^{(\tau)} + 1) &= 0.25 \\p(z^{(\tau+1)} = z^{(\tau)} - 1) &= 0.25\end{aligned}$$

- If initial state is $z^{(1)} = 0$
 - the expected state at time τ will be zero, $E[z^{(\tau)}] = 0$
 - Similarly $E[(z^{(\tau)})^2] = \tau / 2$
 - Thus after τ steps distance traveled is proportional to sqrt (τ)
- Random walks are inefficient
 - MCMC algorithms try to avoid random walk behavior

3. Markov chains

- First order Markov chain is a sequence of random variables $z^{(1)}, \dots, z^{(M)}$ such that

- conditional independence property holds:

$$p(z^{(m+1)} | z^{(1)}, \dots, z^{(m)}) = p(z^{(m+1)} | z^{(m)})$$

- Represented in a directed graph as a chain
- Markov chain specified by
 - Distribution of initial variable $p(z^{(0)})$
 - Conditional (transition) probabilities

$$T_m(z^{(m)}, z^{(m+1)}) = p(z^{(m+1)} | z^{(m)})$$

- Markov chain is homogeneous if all transition probabilities are the same for all m

Markov chain properties

- Marginal probability for a variable
 - Expressed in terms of marginal probability of previous variable in chain

$$p(z^{(m+1)}) = \sum_{z^{(m)}} p(z^{(m+1)} | z^{(m)}) p(z^{(m)})$$

- Invariant or stationary
 - A distribution is invariant wrt a Markov chain if each step leaves the distribution invariant

- $p^*(z)$ is invariant if

$$p^*(z) = \sum_{z'} T(z', z) p^*(z')$$

- Required distribution $p(z)$ is invariant if it satisfies property of detailed balance

$$p^*(z)T(z, z') = p^*(z')T(z', z)$$

Ergodicity

- Our goal is to use Markov chains to sample from a given distribution
- We need to set up a Markov chain such that the desired distribution is invariant
 - Also, irrespective of choice of initial distribution $p(z(0))$,
 - as $m \rightarrow \infty$ the distribution $p(z(m))$ converges to the required invariant distribution $p^*(z)$
- This property is called *ergodicity*
 - And the invariant distribution is called the *equilibrium distribution*

4. Metropolis-Hastings Algorithm

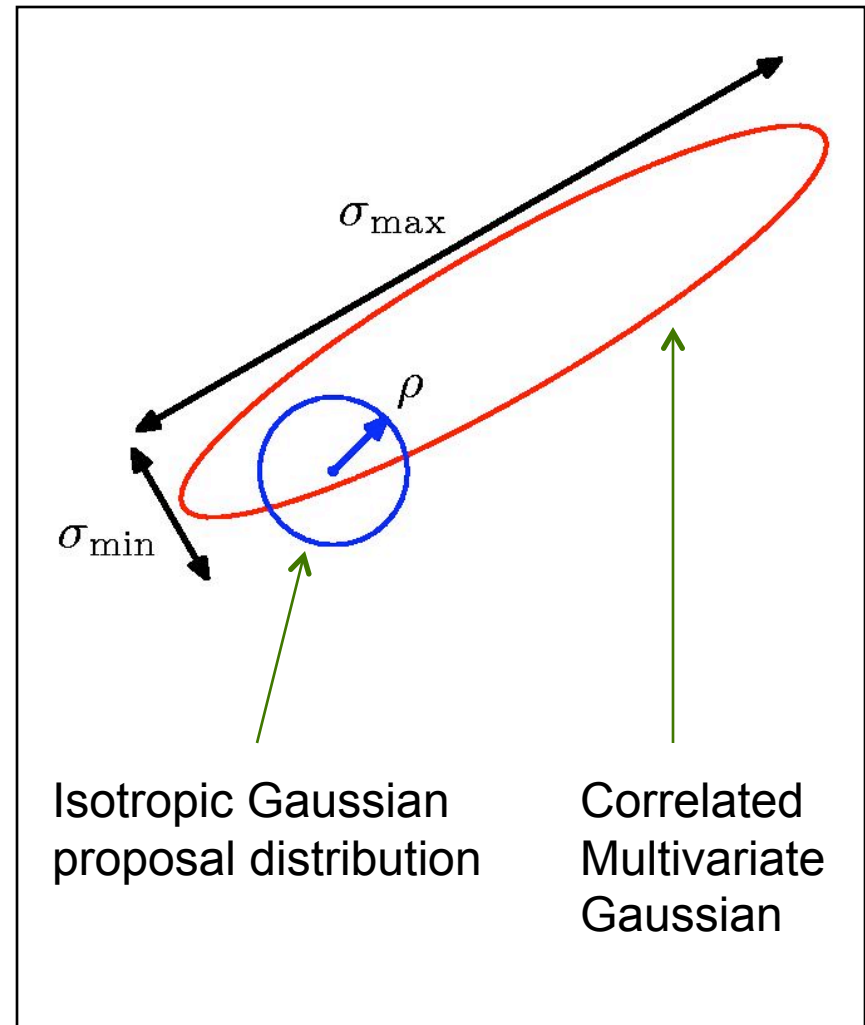
- Proposal distribution is no longer a symmetric function of arguments
- At step t , in which current state is $z^{(t)}$ we draw a sample z^* from distribution $q_k(z|z^{(t)})$
- Accept with probability $A_k(z^*, z^{(t)})$ where

$$A(z^*, z^{(\tau)}) = \min\left(1, \frac{\tilde{p}(z^*)q_k(z^{(\tau)} | z^*)}{\tilde{p}(z^{(\tau)})q_k(z^* | z^{(\tau)})}\right)$$

- Can show that $p(z)$ is an invariant distribution of Markov chain defined by Metropolis-Hastings
 - since detailed balance is satisfied

Choice of Proposal Distribution

- Gaussian centered on current state
- Keeping rejection rate low
 - Proposal ρ should be of order σ_{min}
 - Leads to random walk behavior where no of steps separating states that are independent is of order $(\sigma_{max}/\sigma_{min})^2$

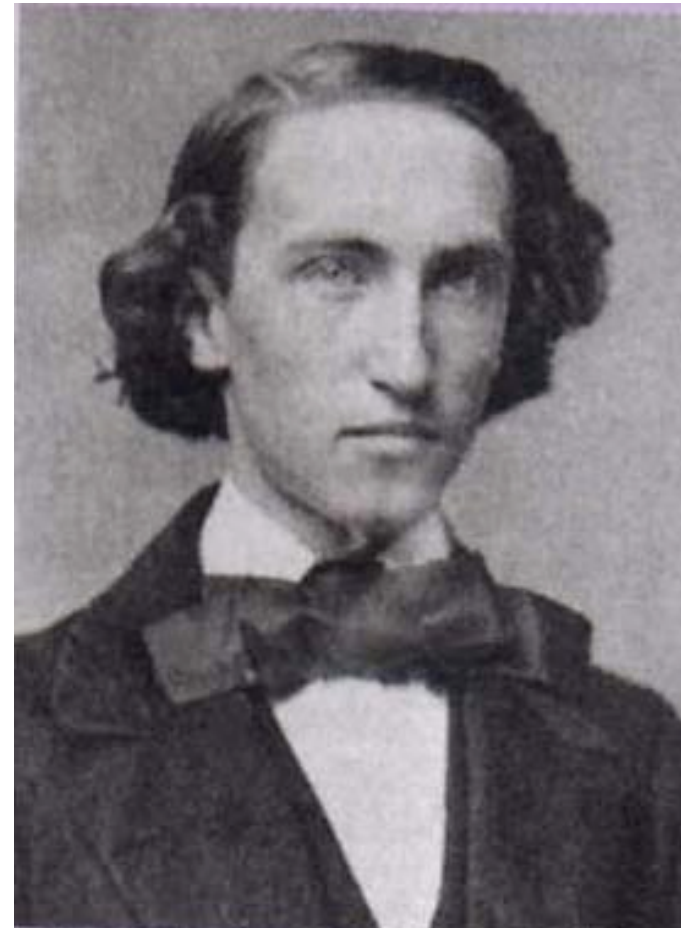


5. Gibbs Sampling

- A simple and widely applicable Markov Chain Monte Carlo algorithm
- It is a special case of Metropolis-Hastings algorithm
- Consider distribution $p(\mathbf{z}) = p(z_1, \dots, z_M)$ from which we wish to sample
- We have chosen an initial state for the Markov chain
- Each step involves replacing value of one variable by a value drawn from $p(z_i | \mathbf{z}_{\setminus i})$
where symbol $\mathbf{z}_{\setminus i}$ denotes z_1, \dots, z_M with z_i omitted
- Procedure is repeated by cycling through variables in some particular order

Josiah Willard Gibbs

- 1839-1903
- Born New Haven Connecticut
- First PhD in Engineering in the United States
- Developed vector analysis, crystallography and planetary orbits



Gibbs with Three Variables

- Distribution $p(z_1, z_2, z_3)$ over three variables
- At step τ selected values are $z_1^{(\tau)}$, $z_2^{(\tau)}$ and $z_3^{(\tau)}$
- Replace $z_1^{(\tau)}$ by new value $z_1^{(\tau+1)}$ obtained by sampling from $p(z_1|z_2^{(\tau)}, z_3^{(\tau)})$
- Replace $z_2^{(\tau)}$ by value $z_2^{(\tau+1)}$ by sampling from $p(z_2|z_1^{(\tau+1)}, z_3^{(\tau)})$
 - New value for z_1 is used straightaway
- Update z_3 with a sample $z_3^{(\tau+1)}$ drawn from $p(z_3|z_1^{(\tau+1)}, z_2^{(\tau+1)})$
- Cycle through three variables in turn

Gibbs Sampling Algorithm

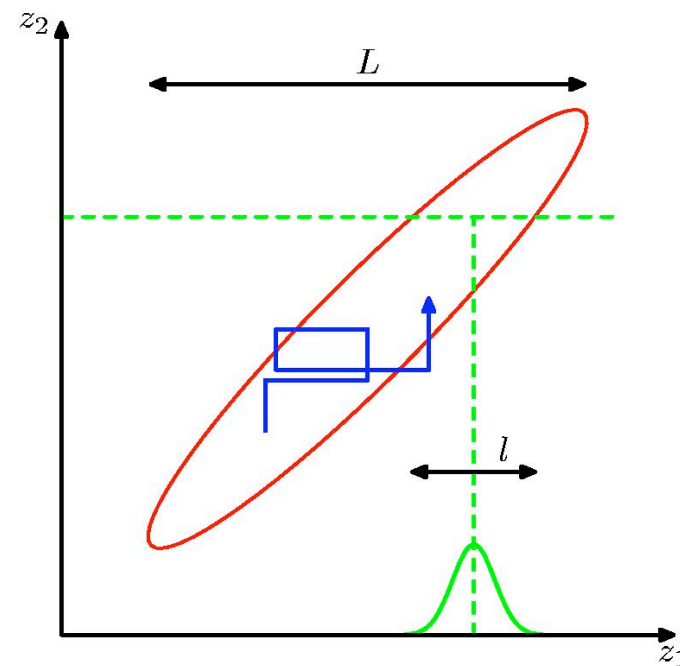
- Initialize $\{z_i, i=1, \dots, M\}$, $M = \text{no of variables}$
- For $t=1, \dots, T$, $T = \text{no of samples}$
 - Sample $z_1^{(\tau+1)} \sim p(z_1 | z_2^{(\tau)}, z_3^{(\tau)}, \dots, z_M^{(\tau)})$
 - Sample $z_2^{(\tau+1)} \sim p(z_2 | z_1^{(\tau+1)}, z_3^{(\tau)}, \dots, z_M^{(\tau)})$
 -
 - Sample $z_j^{(\tau+1)} \sim p(z_j | z_1^{(\tau+1)}, \dots, z_{j-1}^{(\tau+1)}, z_{j+1}^{(\tau)}, \dots, z_M^{(\tau)})$
 -
 - Sample $z_M^{(\tau+1)} \sim p(z_M | z_1^{(\tau+1)}, z_2^{(\tau+1)}, \dots, z_{M-1}^{(\tau+1)})$

Proof of Sampling

- To show that procedure samples from given distribution
- First show that distribution $p(z)$ is invariant of each Gibbs sampling step and hence of whole Markov chain
- Second requirement is ergodicity

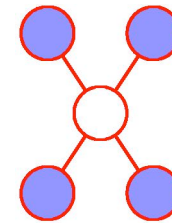
Gibbs sampling of two variables

- Two correlated Gaussian variables
- Step size is governed by standard deviation of conditional distribution
 - Is $O(l)$
 - Leads to slow progress in direction of elongation of the joint distribution
- No of steps needed to obtain an independent sample is $O((L/l)^2)$

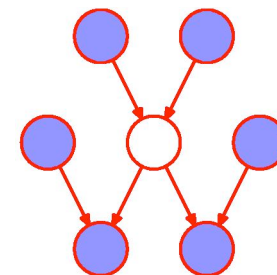


Gibbs sampling and Graphical Models

- Conditional distributions for nodes depend on variables in Markov blanket



Markov blanket for undirected graph



Markov blanket for directed graph

6. Slice Sampling

- Metropolis algorithm is sensitive to step size
 - Too small: slow decorrelation due to random walk behavior
 - Too large: inefficiency due to high rejection rate
- Slice sampling provides an adaptive step size to match the distribution

Illustration of Slice

- For given $z^{(\tau)}$, a value of u is chosen uniformly in region $0 \leq u \leq \tilde{p}(z^{(\tau)})$
 - which is a slice through the distribution

- Since infeasible to sample from slice, a new sample is drawn from

$$z_{\min} \leq z \leq z_{\max}$$

which contains the previous value $z^{(\tau)}$

