

# Biometric Sensors

CSE 666 Lecture Slides  
SUNY at Buffalo

# Overview

- Optical Fingerprint Imaging
- Ultrasound Fingerprint Imaging
- Multispectral Fingerprint Imaging
- Palm Vein Sensors
- References

# Fingerprint Sensors

- Various technologies
  - Optical
  - Capacitive
  - Ultrasound
  - Thermal
  - Multispectral
- Problems
  - Poor image quality in degraded external conditions
  - Spoof attacks

# Fingerprint Image Quality

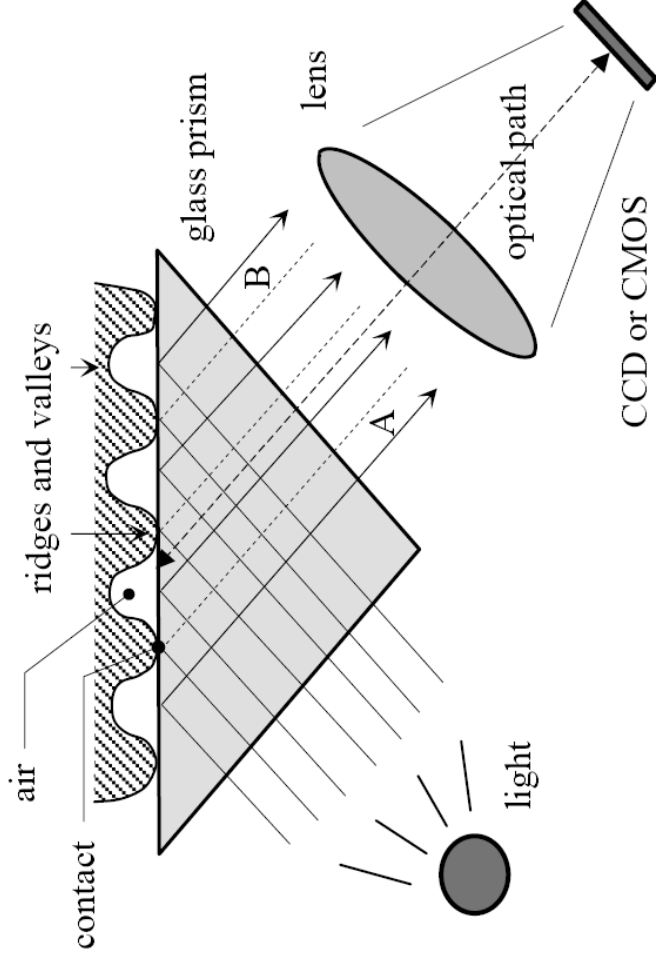
- Reasons for poor image quality
  - Physiology
    - dry fingers due to the natural aging process
    - damaged or worn ridge structures (especially common in the case of manual laborers)
    - fine ridge structure associated with particular demographic groups
  - Behavior
    - Purposeful behavior
    - Incorrect finger placement

# Fingerprint Image Quality – contd.

- Reasons for poor image quality – contd.
  - Environment
    - humidity
    - extreme temperatures
    - finger contamination
    - ambient light
    - platen contamination
    - ghost images
    - plate wear and damage

# Optical Fingerprint Imaging [Maltoni 2005]

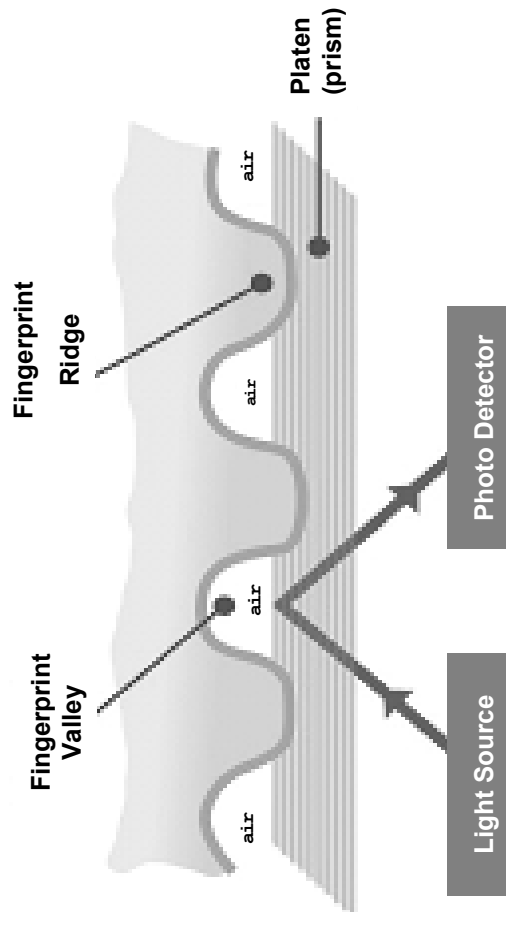
- Imaging done using Frustrated Total Internal Reflection (FTIR)
- Light passing between media of different refractive indices, experiences reflection at the interface
- Depth of penetration depends on wavelength of light



Optical fingerprint capture [Maltoni 2005]

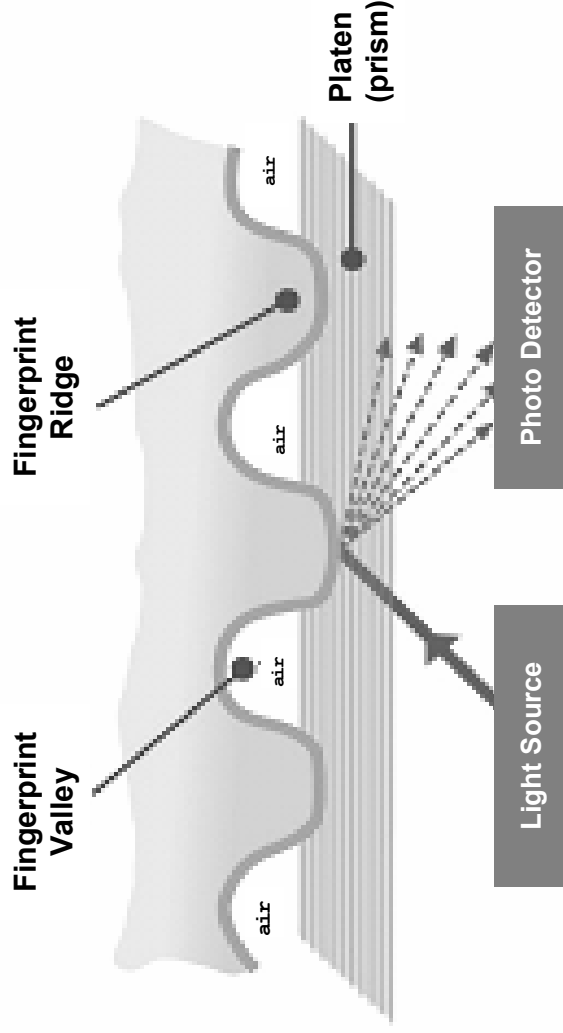
# Optical Fingerprint Imaging – contd.

- Finger placed on imaging plate
- Ridges and valleys
- Valley contains air
- Air does not interfere with light and FTIR occurs



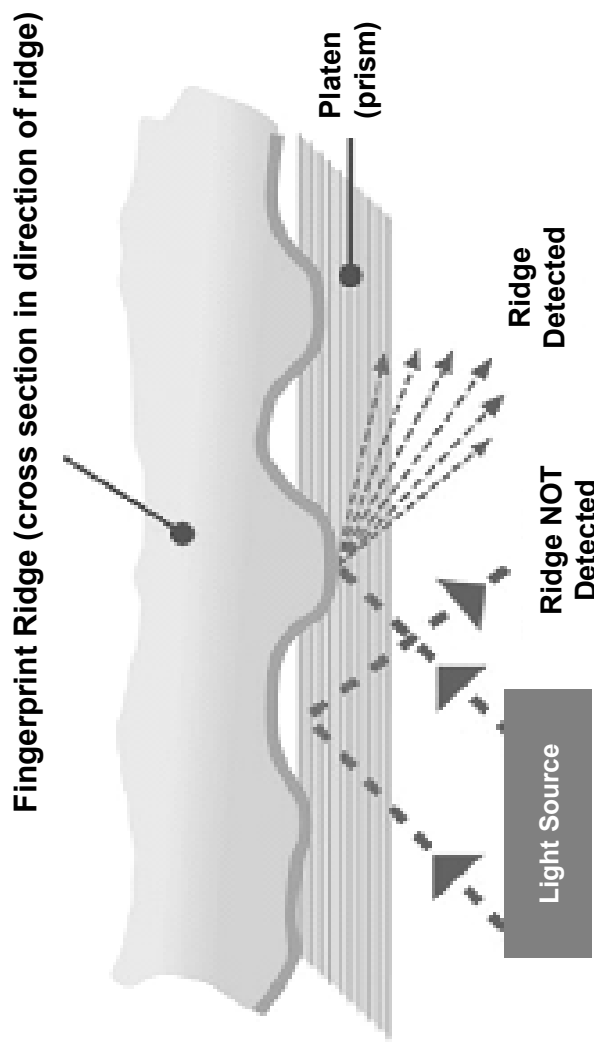
# Optical Fingerprint Imaging – contd.

- Ridges cause interference with incident light
- Partial reflection
- Detectors can measure reflected energy and build picture of fingerprint



# Optical Fingerprint Imaging – contd.

- Problems
  - Finger must come in complete contact with plate
  - Contamination on plate causes false signals
  - Too dry or moist fingers
  - Elastic deformation of finger surface



# Ultrasound Fingerprint Imaging [Schneider 2007]

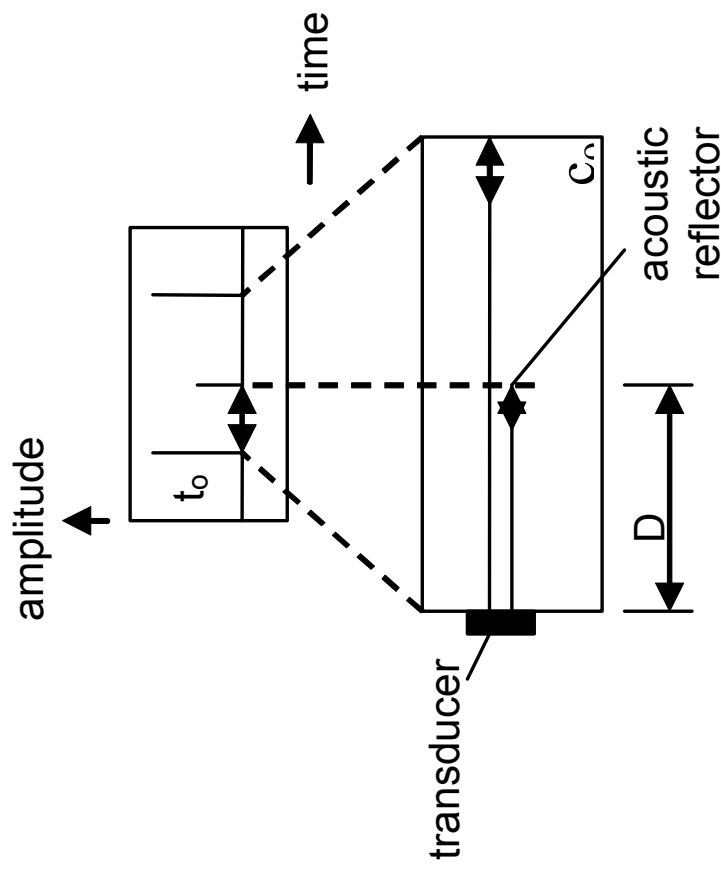
- **Ultrasound imaging**
  - Used for decades in both medical and non-destructive testing
  - No toxic effect of ultrasound on the body with the current power levels
  - Technology depends on transmission and reflection of ultrasound as it propagates through media of varying acoustic coupling

# Ultrasound Fingerprint Imaging – contd.

- **Ultrasound imaging – contd.**
  - Analogous to TIR and refractive index
  - Mapping magnitude of reflected or transmitted energy can generate grayscale image
  - Ridges and valleys detected using pulse-echo technique

# Ultrasound Fingerprint Imaging – contd.

- For two media with acoustic impedance  $z_1$  and  $z_2$  the reflected energy  $R$  is
$$R = (z_2 - z_1) / (z_2 + z_1)$$
- Time to receive echo  $T$  is
$$T = 2D / c_0$$
- Finger placed on imaging plate for stability
- Need to maximize echo caused by valley and minimize from ridge
- Polystyrene plate - acoustic impedance closely matches that of human body



Detection of a small reflector in a pulse-echo system

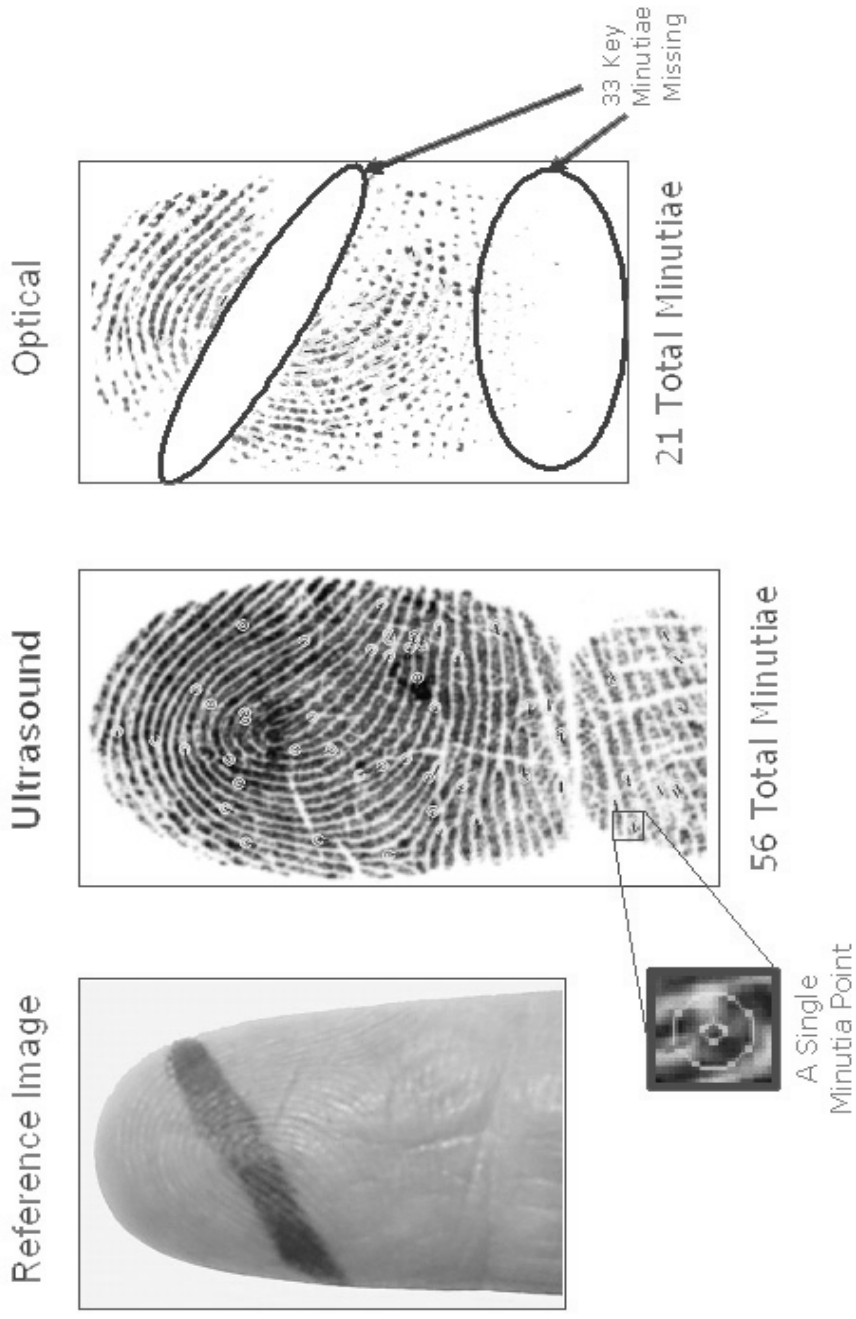
# Ultrasound Fingerprint Imaging – contd.



Optical fingerprint image (left), ultrasonic fingerprint image (right)

No contamination – both images are good [Schneider 2007]

# Ultrasound Fingerprint Imaging – contd.



Ultrasound and optical images of a “contaminated” fingerprint [Schneider 2007]

## Multispectral Fingerprint Imaging [Rowe et. al. 2007]

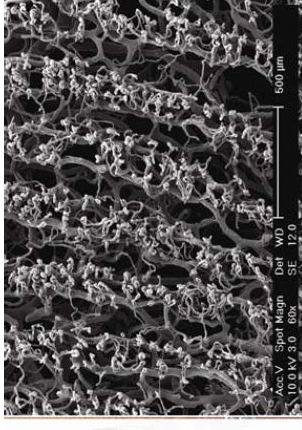
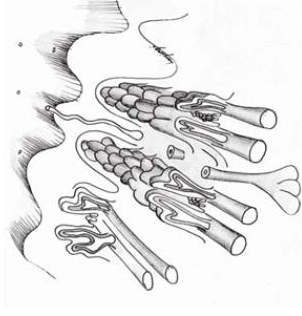
- Multiple images of the finger
- Different wavelengths, illumination orientation, polarization conditions
- Information about both surface and sub-surface features
- Better image acquisition in degraded external conditions
  - Ambient lighting
  - Wetness
  - Poor contact
  - Dry skin

## Multispectral Fingerprint Imaging – contd.

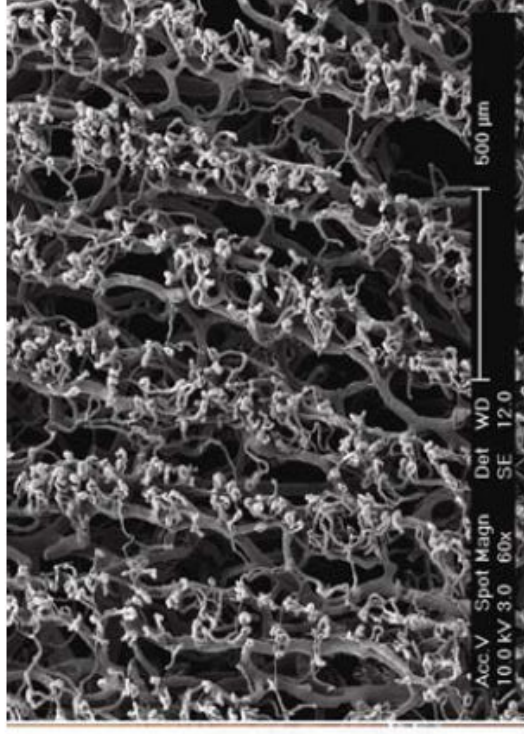
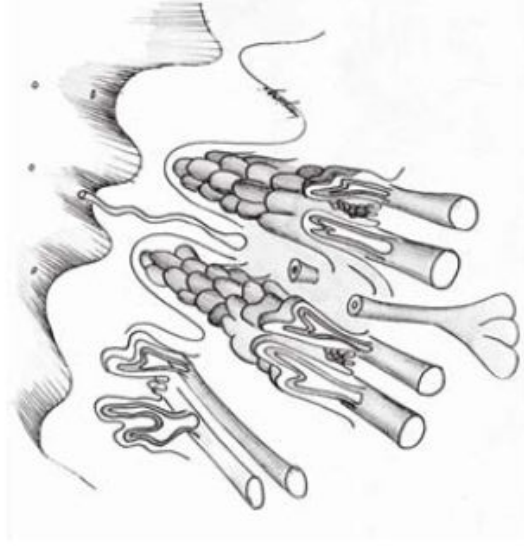
- Spoof attack resistant
- Multiple raw images fused into single high quality composite image
- Backward compatible

# Multispectral Fingerprint Imaging – contd.

- Skin Histology
  - Multi-layered organ
  - Superficial epidermis layer
  - Blood-bearing dermis layer
  - Subcutaneous skin layer containing fat and other inert compounds
  - Most of the dermatoglyphic patterns (ridges and valleys) on palmar side extend to lower layers
  - Interface between epidermal and dermal layers



# Multispectral Fingerprint Imaging – contd.



Histology of the skin on the palmar surface of the fingertip

Left - pattern of capillary tufts and dermal papillae that lie below the fingerprint ridges

Right - capillary tufts from thumb after the surrounding skin has been removed

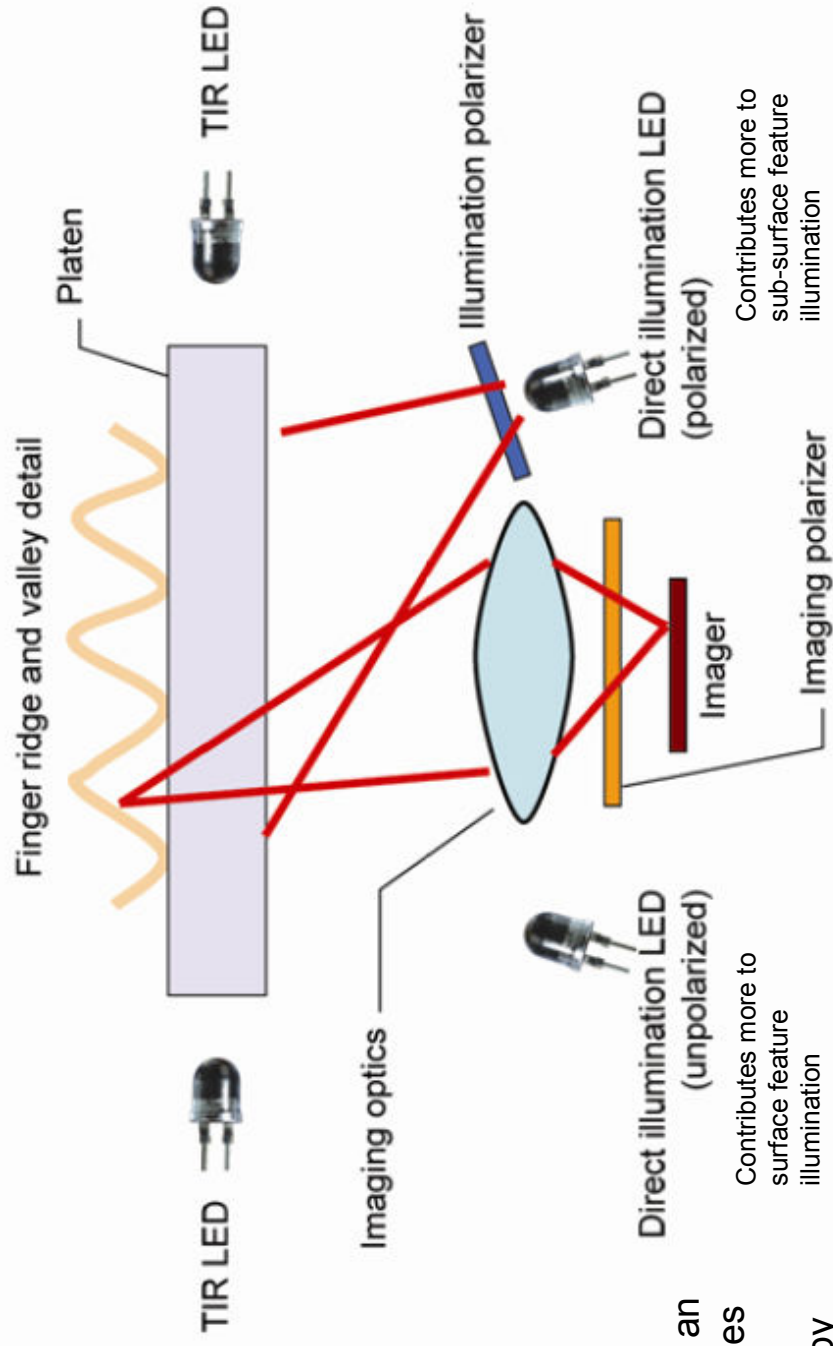
## Multispectral Fingerprint Imaging – contd.

- Optical coherence tomography of lower layers
  - Capture tiny amount of reflected light
  - Analogous to “optical ultrasound”
  - Distinct area of high reflexivity at 0.5 mm below finger ridge
  - Subsurface pattern continues to exist even on application of pressure or skin wrinkle
- Multispectral Imaging (MSI) is another method to capture details of surface and sub-surface features of the skin

# Multispectral Fingerprint Imaging – contd.

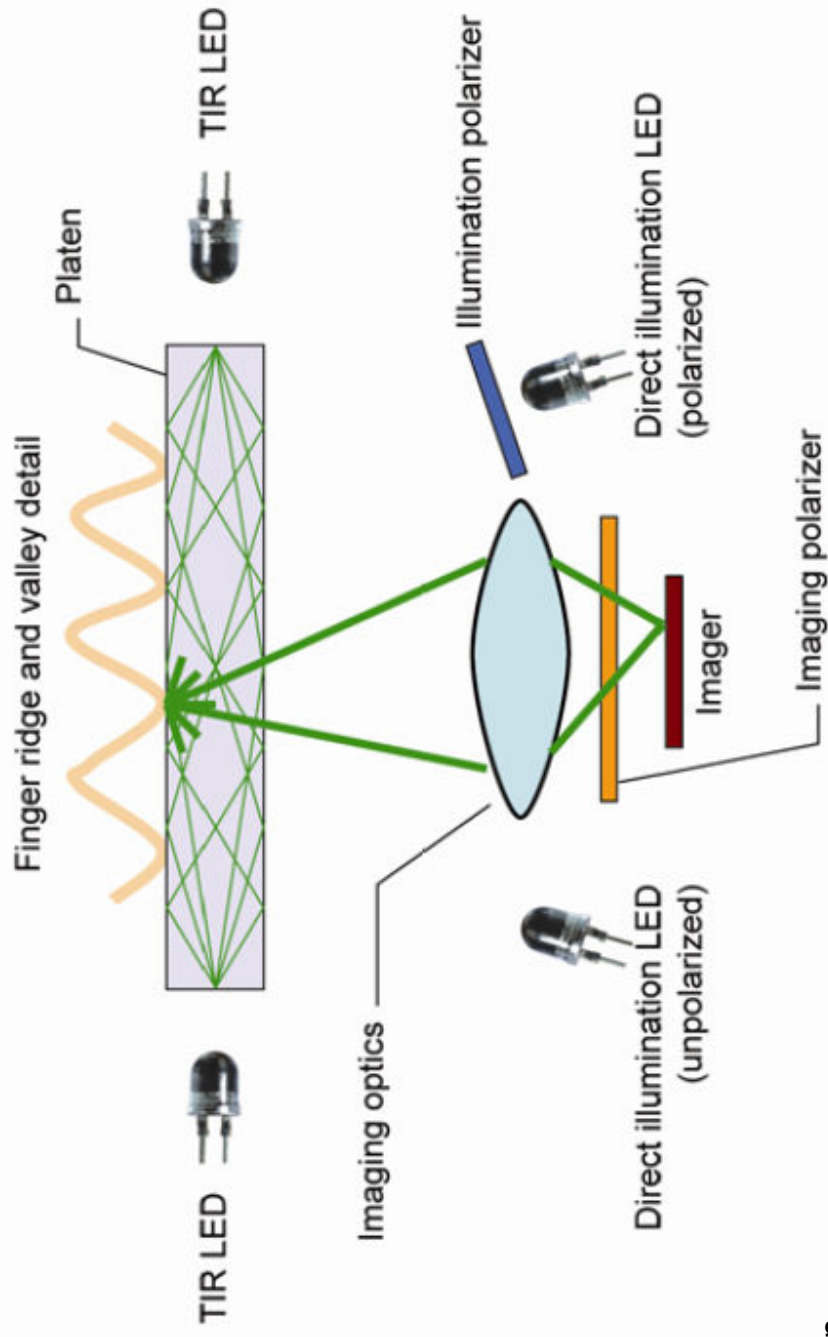
- MSI Principles of Operation
  - Multiple raw images captured
  - Different wavelengths penetrate to different depths and are absorbed and scattered by various chemical components and structures in the skin
  - Different polarization conditions change the degree of contribution of surface and sub-surface features
  - Different illumination orientations change the location and degree to which surface features are accented

# Multispectral Fingerprint Imaging – contd.



Optical configuration of an MSI sensor. The red lines illustrate the direct illumination of a finger by a polarized LED.

# Multispectral Fingerprint Imaging – contd.



MSI sensor schematic showing TIR illumination

# Multispectral Fingerprint Imaging – contd.

- MSI sensors typically contain multiple direct-illumination LEDs of different wavelengths
- Eight direct-illumination images captured and also one TIR image
- Raw images are captured on a 640 x 480 image array with a pixel resolution of 525 ppi
- All nine images are captured in approximately 500 mSec



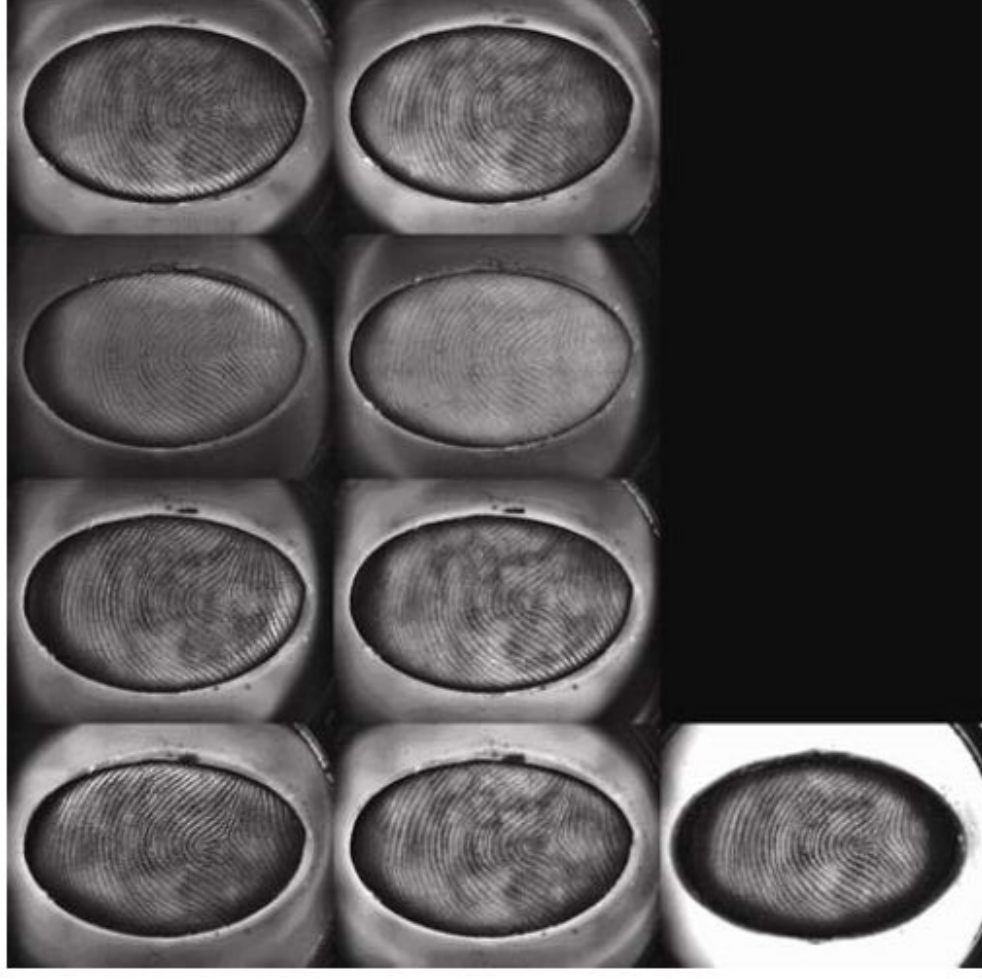
MSI fingerprint sensor

# Multispectral Fingerprint Imaging – contd.

Top row - raw images for unpolarized illumination wavelenghts of 430, 530, and 630 nm, as well as white light

Middle row - images for the cross-polarized case

Bottom row - TIR image



# Multispectral Fingerprint Imaging – contd.

- Sensor also comprises
  - control electronics for the imager and illumination components
  - an embedded processor
  - memory, power conversion electronics, and interface circuitry
- Capable of processing the nine raw images to generate a single 8-bit composite fingerprint image
- Combination of raw images done using wavelet based method
- Analyzes the raw MSI data to ensure that the sample being imaged is a genuine human finger rather than an artificial or spoof material

# Multispectral Fingerprint Imaging – contd.

MSI



TIR



On the left is a composite fingerprint image generated from the raw MSI images.

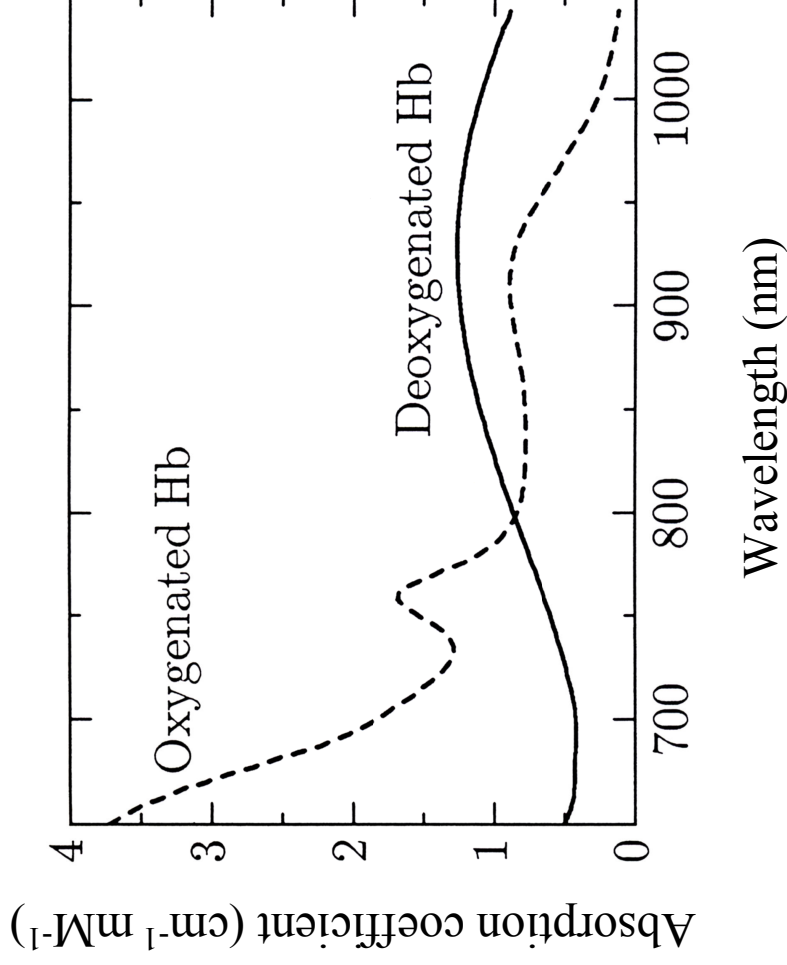
On the right is a conventional TIR image collected on the same finger used to generate the MSI fingerprint.

# Palm Vein Authentication [Watanabe 2007]

- Belongs to the family of vascular pattern authentication technologies
  - Palm, back of hand, fingers, retina
- Internal structures – difficult to reproduce
  - As opposed to face, fingerprint etc.
- Unique to individuals
  - Identical twins have different vein patterns
- Does not change over lifetime
  - Except in cases of injury or disease

# Palm Vein Authentication – contd.

- Concept
  - Blood carries oxygen using hemoglobin
  - Veins carry deoxygenated blood
  - Oxygenated vs. deoxygenated hemoglobin have different absorption spectra
  - Near infrared spectroscopy (NIRS) used to detect veins
  - Deoxygenated hemoglobin absorbs light near 760nm wavelength



Absorption spectra of hemoglobin

# Palm Vein Authentication – contd.

- Shine infrared light (near 760nm wavelength) on palm
- Veins appear darker
- Arteries are more deep seated than veins
- Resulting vein pattern can be extracted and matched against a template



Infrared ray image of palm

# Palm Vein Authentication – contd.

- Two types of imaging methods – reflection vs. transmission
- Reflection method is more effective
- Contactless capture
  - Hygiene considerations



Contact-less palm vein authentication sensor

# Palm Vein Authentication – contd.

- Authentication
  - Feature Extraction
    - Detect palm area
    - Detect palm vein patterns morphologically
  - Matching
    - Find best superimposition of vein patterns against stored template
    - Criterion for superimposition is sum of distances between pixels that compose the registered template and acquired signal

# Palm Vein Authentication – contd.

- Implementation
  - FAR of 0.00008% and FRR of 0.01% on a set of 150,000 palms
  - Door security systems
  - ATMs
  - Laptop security



# References

- [1] Davide Maltoni, “A Tutorial on Fingerprint Recognition”; M. Tistarelli, J. Bigun, and E. Grosso (Eds.): Biometrics School 2003, LNCS 3161, pp. 43-68, 2005.
- [2] Robert K. Rowe, Kristin Adair Nixon and Paul W. Butler, “*Multispectral Fingerprint Image Acquisition*”; Advances in Biometrics: Sensors, Algorithms and Systems, Nalini K. Ratha, Venu Govindaraju (Eds.) 2007
- [3] John K. Schneider, “*Ultrasonic Fingerprint Sensors*”; Advances in Biometrics: Sensors, Algorithms and Systems, Nalini K. Ratha, Venu Govindaraju (Eds.) 2007
- [4] Masaki Watanabe, “*Palm Vein Authentication*”; Advances in Biometrics: Sensors, Algorithms and Systems, Nalini K. Ratha, Venu Govindaraju (Eds.) 2007