

# Sentiment Analysis of Blogs

Information Retrieval Seminar  
Spring 2005  
University at Buffalo

23 March 2005

**Paula Chesley**  
Linguistics Department  
University at Buffalo  
pchesley@buffalo.edu

# Introduction to Sentiment Analysis

- ❑ Sentiment Analysis : What it is
  - Mining of subjective text
  - Subjective : “relating to or being experience or knowledge as conditioned by personal mental characteristics or states”; “modified or affected by personal views, experience, or background”
  - Can be to inform
  - Very frequently from online data (customer reviews, online news sources, forums, etc.)
- ❑ Sentiment Analysis : Why it’s important
  - Trying to make the enormous web more pertinent to people’s queries
  - Gauge of public opinion in several domains
    - Commercial : stocks, customer reviews
    - Government : opinions on new bills, current events
    - R&D : more organized web ?

## Sentiment Analysis Applied to Blogs

- ⚡ A blog is a personal space in which people discuss their opinions relatively candidly
- ⚡ Why it's different from other works on sentiment analysis
  - Format of blogs
    - We're only interested in the text in the posts
    - Each post is liable to be about a completely different subject
  - Propagation of information
    - Sentence  $\rightarrow$  Post  $\rightarrow$  Blog ( $\rightarrow$  Author?)
    - $\therefore$  some sort of combinatorial metric, like clustering or vectors (more on this later!)
  
- ⚡ Other work in sentiment analysis of blogs?

## Sentiment Analysis Applied to Blogs, 2

### Two Whole Years

Filed under: Personal, Work Sucks — Jennifer at 11:25 am on Monday, February 21, 2005

Today is my two year anniversary with Walgreens. I'm actually pretty excited.

Now, you may have read my past posts and gotten the impression that I do not like Walgreens. This is so very false. I love Walgreens. I think it is possibly the best company to work for. They do take care of their employees. Their benefit and stock options are above what anyone can expect. I love my coworkers, my store management and the district management. I consider myself lucky to be working for such a great company.

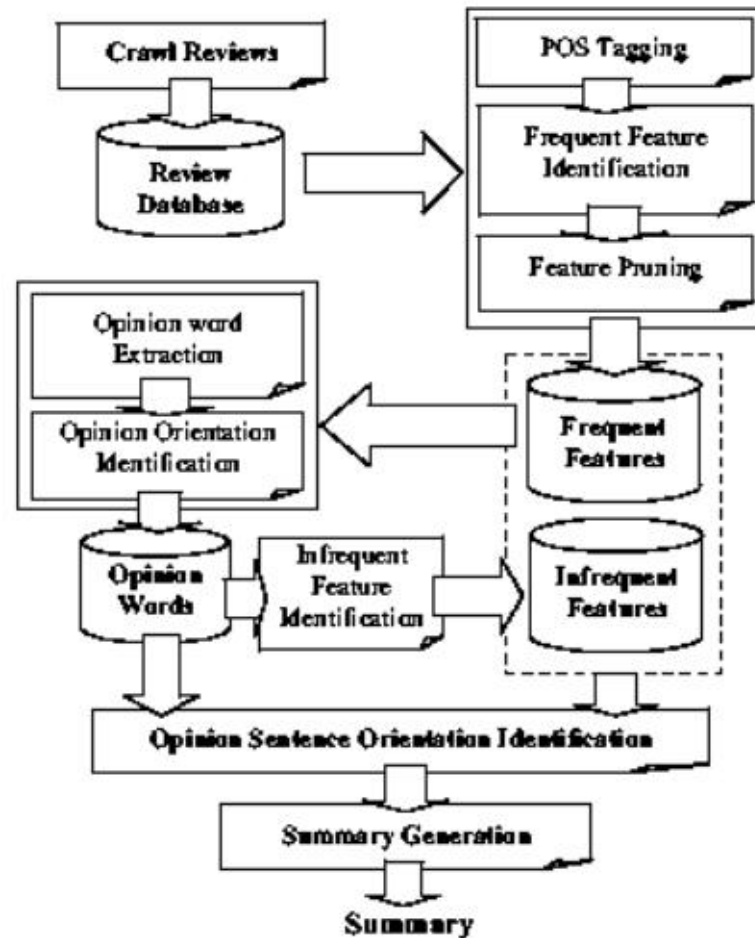
I think the best thing Walgreens offers is job security. You don't have this in many companies these days. This is one company that you will not see going belly up and having to shut down or merge with another company. Every store they open is 100% paid for before the doors unlock for their first sale.



## Relevant Works 1 : “Mining and Summarizing Customer Reviews”

- ⌘ Aim : provide polarity response (positive/negative) in customer reviews of a particular product (“opinion orientation”)
- ⌘ Steps
  - Mining product features commented on by customers
    - e.g., a digital camera with features *size*, *picture quality*
  - Identifying opinion sentences in the review
    - Focus on individual sentences, not the whole review (cf. Dave, Lawrence & Pennock (2003))
    - Does not require training corpus (cf DLP)
    - Does *not* include parsing, only POS tagging
    - Must have explicit product reference in sentence (cannot take into account anaphors : “While light, it will not easily fit in pockets”)
  - Summarizing the results

## Relevant Works 1 : Hu and Liu (2004), Architecture



## Relevant Works 1 : Hu and Liu (2004), Dealing with Opinions

- ⌘ Def. *opinion sentence* : A sentence containing one or more product features and one or more opinion words
- ⌘ ...for the time being, most likely the same def. for us
- ⌘ Polarity orientation of opinions
  - For adjectives
  - Info. not contained in WordNet!
  - “fabulous”

Sense 1

fabulous, fab

=> pleasing (vs. displeasing)

Sense 2

fabulous, mythic, mythical, mythologic, mythological

=> unreal (vs. real)

Sense 3

fabulous

=> incredible (vs. credible), unbelievable

## Relevant Works 1 : Hu and Liu (2004), Dealing with Opinions, 2

- ∴ So, how to get a polarity orientation of an adjective ?
  - A *seed list* of adjectives of known orientation (30 to start) . . .
  - . . .to which an adjective is added once its polarity is found
  - This is done by checking the synonym and antonym lists the adjective belongs to
- ∴ At the sentence level
  - If more adjectives of a certain polarity, → the sentence has that polarity orientation
  - If equal number of adjectives of both polarity, *effective opinion* of previous sentence is used
  - If there is a negation word in proximity, → opposite polarity orientation

## Relevant Works 1 : Hu and Liu (2004), Evaluation

**Table 3: Results of opinion sentence extraction and sentence orientation prediction**

Product name	Opinion sentence extraction		Sentence orientation accuracy
	Recall	Precision	
Digital camera 1	0.719	0.643	0.927
Digital camera 2	0.634	0.554	0.946
Cellular phone	0.675	0.815	0.764
Mp3 player	0.784	0.589	0.842
DVD player	0.653	0.607	0.730
<b>Average</b>	<b>0.693</b>	<b>0.642</b>	<b>0.842</b>

- ❖ Recall : 0.693 ; Precision : 0.642 ; Orientation Accuracy : 0.842
- ❖ Manual evaluation
- ❖ Issues
  - Difficulty with feature extraction
  - “Judging opinions can be somewhat subjective” – does a sentence offer an opinion ?

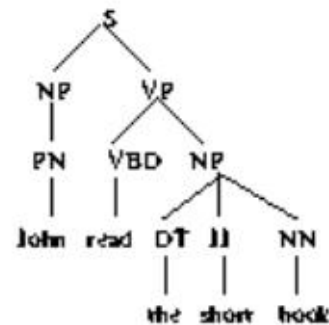
## Relevant Works 2 : “Just how mad are you ? Finding Strong and Weak Opinion Clauses”

- ⌘ Aim : classify the strength of opinions in clauses in sentences
- ⌘ Clause : “[I think [that outsourcing is fabulous]]”
- ⌘ “31% of sentences are made up of clauses that differ in strength by two or more strength ratings”
- ⌘ Def. *private state* : A state that is not open to objective observation or verification (Quirk 1985)
- ⌘ Private states are expressed by direct mention, speech events, *expressive subjective elements* (Banfield (1982))
- ⌘ Makes use of syntactic features (thus, parsing) and training corpus
- ⌘ Not limited to a fixed vocabulary
- ⌘ Methods used : boosting, rule learning, support vector regression
- ⌘ Interaction supposed between strength and polarity

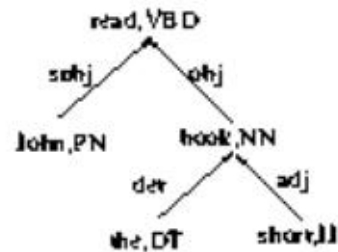
## Relevant Works 2 : WWH (2004), Subjectivity Clues

- ❑ PREV clues, previously established clues from manually developed resources
- ❑ Clues learned from annotated data : distributionally similar adjectives and verbs and n-grams
- ❑ Low-frequency words and filler replacements
- ❑ Syntactic clues
  - Parsing : constituent and dependency representations

Constituent Tree



Dependency Tree



## Relevant Works 2 : WWH (2004), Subjectivity Clues, 2

- ⌘ root( $w, t$ ) : word  $w$  with POS tag  $t$  is the root of a dependency tree
- ⌘ leaf( $w, t$ ) : word  $w$  with POS tag  $t$  is a leaf in a dependency tree
- ⌘ node( $w, t$ ) : word  $w$  with POS tag  $t$
- ⌘ bilex( $w, t, r, w_c, t_c$ ) : word  $w$  with POS tag  $t$  is modified by word  $w_c$  and the grammatical rel. is  $r$
- ⌘ allkids( $w, t, r_1, w_1, t_1 \dots, r_n, w_n, t_n$ ) : word  $w$  with POS tag  $t$  has  $n$  children. Each child word  $w_i$  has POS tag  $t_i$  and modifies  $w$  with grammatical rel.  $r_i$
- ⌘ A clue is potentially useful if more than 70% of its occurrences in the MPQA data are marked as subjective
- ⌘ Also : notion of *reliability* (frequency measure)
- ⌘ Organization of clues into sets of features

## Relevant Works 2 : WWH (2004), Automatic Strength Classification

- ∴ Hypotheses
  - Possible to classify the strength of clauses at all levels ?
  - Depends on a variety of lexico-syntactic features ?
  - Organizing features by strength beneficial ?
- ∴ Factors to be varied
  - Learning algorithm used to train classifiers
    - Boosting : BoosTexter with 1000 rounds of boosting
    - Support vector regression : SVMlight
    - Rule learning : Ripper
  - Depth of clauses to be classified
  - Types of features used

## Relevant Works 2 : WWH (2004), Strength Classification Methodology

- ⌘ Automatic evaluation
- ⌘ 9313 sentences tested
- ⌘ MPQA used as gold standard
- ⌘ Mean-squared error used as evaluation method
- ⌘  $n$  : number of sentences or clauses classified
- ⌘  $t_i$  : true strength of sentence
- ⌘  $p_i$  : predicted strength of sentence

$$MSE = \frac{1}{n} \sum_i^n (t_i - p_i)^2$$

## Relevant Works 2 : WWH (2004), Evaluation

	level 1		level 2		level 3		level 4	
	MSE	Acc	MSE	Acc	MSE	Acc	MSE	Acc
(1) baseline	1.921	30.8	2.749	41.8	2.538	45.9	2.507	48.3
(2) BAG	1.234	50.9	1.390	53.1	1.534	53.6	1.613	53.0
(3) PREV-type + SYNTAX-type	1.135	50.2	1.267	53.4	1.339	54.7	1.410	55.5
(4) PREV-strength + SYNTAX-strength	1.060	54.1	1.180	56.9	1.258	57.9	1.269	60.3
(5) BAG + PREV-type + SYNTAX-type	1.069	52.0	1.178	54.8	1.267	55.9	1.321	56.8
(6) BAG + PREV-strength + SYNTAX-strength	<b>0.991</b>	<b>55.0</b>	<b>1.111</b>	<b>57.0</b>	<b>1.225</b>	<b>57.5</b>	<b>1.211</b>	<b>59.4</b>
(7) BAG + PREV-strength	1.081	54.1	1.205	56.0	1.364	55.4	1.363	57.0

- ∴ Results for Ripper and SVMlight show similar patterns
- ∴ The best results use all features (supports hypothesis (2))
- ∴ Results on which syntactic features were more helpful not indicated
- ∴ Improvement in boosting from bag of words : “from 7% to 12%”
- ∴ Is this enough ?

## Relevant Works 3 : “Role of Verbs in Document Analysis”

- ⌘ Does not explicitly focus on sentiment analysis
- ⌘ More about genre detection of articles – WSJ (communication, opinion, business)
- ⌘ Opinion genre = sentiment !
- ⌘ WordNet and verb classes are tested to discriminate documents by type and semantic properties (event profile)
- ⌘ Verb classes
  - A group of verbs that have similar syntactic patterns and thus similar semantics
  - Example : ballistic vs. entrained motion (Koenig and Davis 2000)
    - Pat threw the groceries to me/Pat threw me the groceries. (ballistic : force applied at beginning of trajectory)
    - Ballistic verbs : throw, toss, kick, roll
    - Pat pulled the groceries to me/\*Pat pulled me the groceries. (entrained : force applied throughout trajectory)
    - Entrained verbs : pull, drag, lift, haul

## Relevant Works 3 : “Role of Verbs in Document Analysis”, 2

- ∴ WordNet is *not* effective due to polysemy/word sense disambiguation issues
- ∴ Using verb classes shows monosemous categorization of frequent verbs is effective in discriminating documents
- ∴ Distinguish work on verbs (events) from work on nouns (entities) (and adjectives)
- ∴ “The set of verbs in a document. . .can be viewed as part of the conceptual map of the events and action in a document, in the same way that the set of nouns has been used as a concept map for entities”
- ∴ “Verbs contribute information that an article is a report with more opinions than facts. . .If we ignore verbs, this fact would be overlooked”

## Relevant Works 3 : Klavans and Kan (1998), WordNet

- ⌘ Use the hypernym/hyponym relationship in WN to relate verbs
- ⌘ Premise : “words with similar meanings will be located relatively closely to each other in the hierarchy”
- ⌘ Results degraded by polysemy in WN

Synset	Sample Verbs in Synset	Article types (listed in order)
Act (interact, act together, ...)	have, relate, give, tell	announcements, editorials, features
Communicate (communicate, intercommunicate, ...)	give, get, inform, tell	announcements, editorials, features, poems
Change (change)	have, modify, take	poems, editorials, announcements, features
Alter (alter, change)	convert, make, get	announcements, poems, editorials
Inform (inform, round on, ...)	inform, plain, describe	announcements, poems, features

## Relevant Works 3 : Klavans and Kan (1998), WordNet Evaluation

- ∴ Evaluation using Kendall's  $\tau$
- ∴ A metric to show independence between variables
- ∴ +1.0 = direct correlation, -1.0 = inverse correlation, 0 = independence
- ∴ "Frequent synsets do not behave independently of each other"

	act	com	chng	alter	infrn	expe	thnk	judg	trnf
state	.407	.298	.672	.481	.288	.269	.238	.355	.268
trnf	.437	.438	.751	.438	.751	.404	.369	.359	
judge	.414	.414	.435	.450	.340	.348	.477		
expre	.414	.414	.435	.397	.372	.432			
think	.414	.414	.435	.397	.398				
infrn	.814	.819	.341	.380					
alter	.501	.454	.619						
chng	.498	.393							
comun	.850								

## Relevant Works 3 : Klavans and Kan (1998), Verb Classes

- ⌘ Manual categorization of 100 most frequent verbs + 50 addl verbs
- ⌘ ∴ subset of “less ambiguous verbs”
- ⌘ Monosemous uses ?
- ⌘ Coverage : 56%

Verb Class (sample verbs)	Article types (listed by frequency)
Communication (add, say, announce, ...)	issues, reports, opinions, editorials
Motion (rise, fall, decline, ...)	posted earnings, announcements
Agreement (agree, accept, concur, ...)	mergers, legal cases, transactions (without buying and selling)
Argument (argue, indicate, contend, ...)	legal cases, opinions
Causative (cause)	opinions, feature, editorials

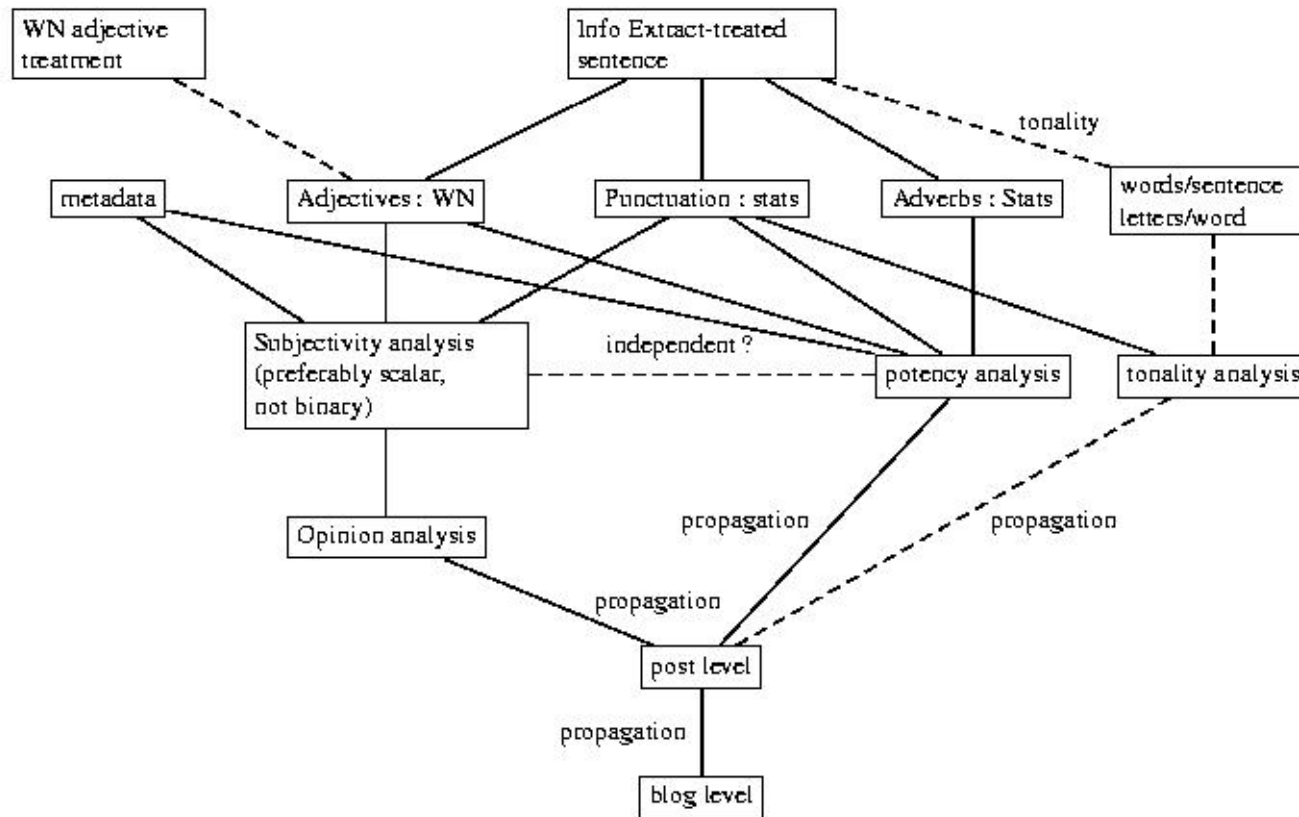
## Relevant Works 3 : Klavans and Kan (1998), Verb Classes Evaluation

### :: $\tau$ evaluation

	common	motion	agree	argue	exp	aspect	cause
appear	.122	.078	.077	.072	.182	.112	.037
cause	.032	.082	.000	.000	.072	.028	
aspect	.248	.285	.024	.110	.180		
exp	.280	.130	.054	.054			
argue	.182	.045	.022				
agree	.071	-.028					
motion	.250						

- :: Results much lower than similar numbers for WN
- ::  $\therefore$  verb classes behave independently of each other
- :: At 59% coverage, polysemy problems show up
- :: So the comparison is not really fair to WN
- :: Nevertheless, verb class info. is helpful in determining genre (and thus opinions)

## Our Approach, Architecture



- ⌘ Determining polarity orientation of adjectives : WN, same as Hu and Liu (2004)

## Our Approach, Details

- ∴ Vector space model to propagate from sentence → post → blog (→ author?)
  - Take all WN synonyms/hyponyms of query terms and look for all these in a sentence
  - Determine if polarity orientation is similar to that of query
  - Vector space model for a certain post using all synonyms/hyponyms as weighted terms
  - $q$  = query vector,  $d$  = document vector
  - $n$  = total number of synonyms/hyponyms

$$\cos(\vec{q}, \vec{d}) = \frac{\sum_{i=1}^n q_i d_i}{\sqrt{\sum_{i=1}^n q_i^2} \sqrt{\sum_{i=1}^n d_i^2}}$$

- Vector space model for the entire blog
- If the entire blog is above a certain relevancy criteria, return entire blog ; if not, return only the post